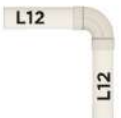


SYSTEM DESIGN



1 INSERT THE WATER PROOF GASKETS

DELIVERY MANIFOLD A
2/3 ROWS



RETURN MANIFOLD A
2/4 ROWS



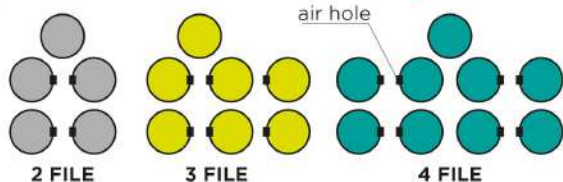
DELIVERY MANIFOLD B
3/4 ROWS



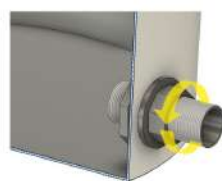
RETURN MANIFOLD B
3 ROWS



2 RETURN AND DELIVERY MANIFOLD ARE PRE ASSEMBLED AND READY TO USE



3 SET THE GROWING POTS WITH THE AIR HOLE FACED EACH OTHER AS SHOWN IN THE PICTURE ABOVE



3 PUT THE 3/4" BULKHEAD AT THE BOTTOM OF THE CONTROLLER POT



4 WATER PUMP HAVE TO BE SET INSIDE THE CONTROLLER POT. HAVE A LOOK TO THE GENERAL MANUAL INSTRUCTION FOR MORE INFO

SYSTEM SET UP

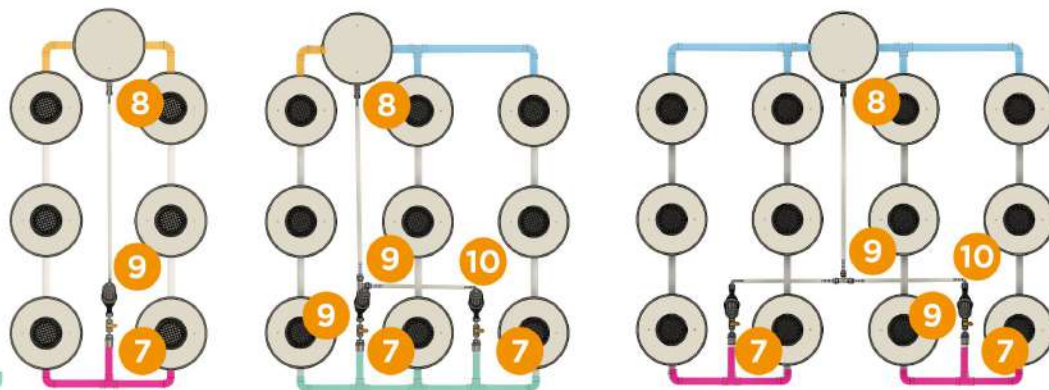
6 ASSEMBLE THE SYSTEM WITH THE RELATIVE RETURN AND DELIVERY MANIFOLD AS SHOWN IN THE PICTURE. LUBRICATE WITH SOAP OR OTHER LUBRICANT BEFORE INSERT THE PIPE INSIDE THE GASKETS

DELIVERY MANIFOLD A
2/3 ROWS

DELIVERY MANIFOLD B
3/4 ROWS

RETURN MANIFOLD A
2/4 ROWS

RETURN MANIFOLD B
3 ROWS



RETURN HOSE KIT

↑
REFERENCES ABOVE



7 SCREW THE VALVE WITH FILTER ON THE MALE FITTING 3/4"



8 CONNECT THE RETURN HOSE 16MM TO CONTROLLER POT VALVE



9 CONNECT THE OTHER SIDE OF THE RETURN HOSE 16MM TO THE IN LINE FILTER

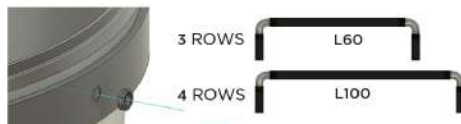


10 PREASSEMBLED RETURN HOSE JOINT FOR 3/4 ROWS SYSTEM. CONNECT THEM FROM THE IN LINE FILTER TO THE RETURN HOSE 16MM

AIR DISTRIBUTION



11 SET THE WATER PUMP ABOVE THE SYSTEM WATER LEVEL



12 PUT THE AIR GASKETS

13 NEI SISTEMI A 3/4 FILE SI UTILIZZANO DEI GIUNTI.



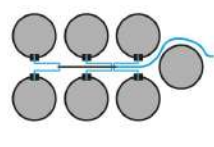
14 CONNECT THE WATER PUMP TO THE AIR DISTRIBUTION LINE



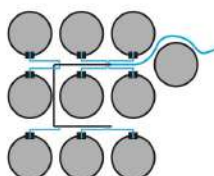
15 ASSEMBLE THE AIR STONES AND PUT THEM INSIDE THE POTS



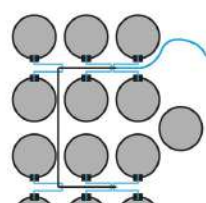
16 AIR DISTRIBUTION LINE IS COMPOSED BY AIR MANIFOLD AND 12MM PIPES. LOOK AT THE INSTRUCTION MANUAL FOR MORE INFO.



17 EXAMPLE OF 2 ROWS AIR DISTRIBUTION LINE



18 EXAMPLE OF 3 ROWS AIR DISTRIBUTION LINE



19 EXAMPLE OF 4 ROWS AIR DISTRIBUTION LINE



20 CONNECT THE AIR MANIFOLD TO THE AIR STONE USING A CUT OF 50CM OF SILICON HOSE 6MM

SYSTEM COMPONENTS

SYSTEM COMPONENTS

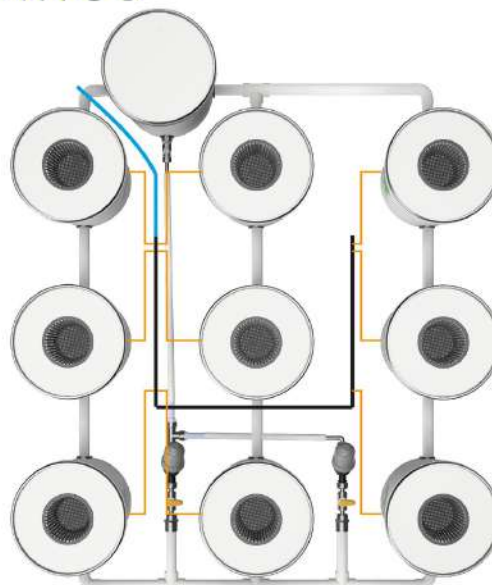
CONTROLLER POT

AIR DISTRIBUTION

							
CONTROLLER POT RDWC 2.0	GROWING POT RDWC 2.0	CONTROLLER POT LID	GROWING POT LID	NET POT 14CM	WATER PROOF GASKETS 32MM	PUSH FIT ELBOW 32MM	PUSH FIT TEE 32MM
SI-GRC32VDC19	SI-GRC32VPAS19	SI-GRCOP19	SI-GRCOP191F	ID-NETHD014	RC-GSKGGDN32	RC-PPBG90322B	RC-PPBT90323B
							
PVC PIPE 32MM	IN LINE FILTER + 3/4 VALVE FF	BULK HEAD 3/4"	BALL VALVE 3/4" MF	MALE FITTING 3/4"	RETURN HOSE 16MM	FEMALE BARBED FITTING 16X3/4"	MALE BARBED FITTING 16X3/4"
TU-PVC32012 TU-PVC32020 TU-PVC32030 TU-PVC32045	SI-GRC32FVDK	RC-ATSPC	RC-VALCMF	SI-GRC32CM016	TU-PVCGFP16	RC-PG16X34GM	RC-PG16CM
							
ELBOW BARBED FITTING 16X3/4" F	TEE 3/4" FITTING FFF	WATER PUMP	HX2500 WATER PUMP INPUT JOINT	HR1000/1500 WATER PUMP INPUT JOINT	EDEN 135 WATER PUMP INPUT JOINT	THREADED EXT. (HR/EDEN PUMP)	THREADED ELBOW T3/4" M F
RC-PG9016CGM	RC-FILTECCFFFGM	ID-PAC135TB ID-PACHR1000 ID-PACHX2500	SI-GRCHX25GP	RC-FILMAN8CMFGM	RC-FILMANCGM	RC-FILPRLBC	RC-FIL90CCFMGM
							
GOMITO FIL. 3/4"	SYSTEM INPUT/OUT CHILLER FITTING		HX2500 DOWNLOAD CHILLER IN FITTING	HR/EDEN DOWNLOAD CHILLER IN FITTING	SILICON AIR HOSE 6X4MM	SILICON AIR HOSE 12X8MM	PVC HOSE 6MM - L 30CM
RC-FIL90CCMF	SI-GRCVDCIN		SI-GRCHX25OUT	SI-GRC32HROUT	TU-SIL0604100	TU-PVCTH0812	PVC64030
							
AIR GASKETS 6MM	AIR ELBOW 3X5MM	AIR MANIFOLD 12X6MM 1 WAYOUT	AIR MANIFOLD 12X6MM 2 WAYOUT	AIR MANIFOLD 12X6MM 4 WAYOUT	AIR STONE	AIR PUMP serie V	AIR DISTRIBUTION JOINT - 3/4 ROWS
RC-GSKPT1006	RC-PG900305	RC-PGMU1206U1	RC-PGMU1206U2	RC-PGSMU1206U4	ID-POR1002020B	ID-PARV20 ID-PARV30 ID-PARV60	SI-GRC50GCA3F SI-GRC50GCA4F

GROWRILLA[®] new 2.0

HYDROPONICS



Scan the QR code and download the **FULL VERSION** of the instruction manual in pdf version directly on your smartphone or pc.



SCAN ME



GROWRILLA[®] HYDROPONICS

Growrilla Hydroponics is a 100% Italian brand of hydroponic farming systems, designed and made in Italy by growers for growers.



+39 329 3237168



www.growrillahydroponics.com
info@growrillahydroponics.com



Strada Comunale da Bertolla
all'Abbadia di Stura, 140
10156 Torino - ITALY