

The logo for Gavita Horticultural Lighting. It features the word "GAVITA" in a large, bold, black sans-serif font. Below it, the words "HORTICULTURAL LIGHTING" are written in a smaller, black sans-serif font. The text is partially overlaid by an orange square that is tilted clockwise.

GAVITA
HORTICULTURAL LIGHTING

Gavita **RS1** Remote Switch

User manual

A large, solid orange shape in the bottom-left corner of the page, which is a tilted square or rectangle.



Dear customer,

Congratulations on the purchase of your RS1 Remote Switch. This manual contains all the information necessary to install, use and maintain the Gavita RS1 Remote Switch. Please read and understand this manual completely before installing and using the product.

In this manual, the Gavita RS1 Remote Switch will be referred to as "the remote switch".

This is the original manual, keep it in a safe location!

1. Introduction

The Gavita RS1 Remote Switch is a manual light intensity controller. It can be used to switch, dim or boost one or multiple linked fixtures at once.

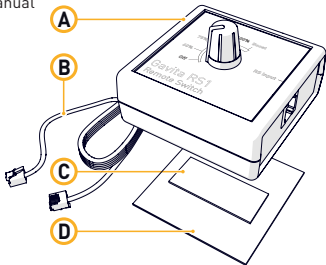
For information on fixture setup and daisy chaining, please consult your fixture Manual.

2. Product specifications

EAN Code	8718403054591
Part Number	HGC990828
Dimensions	2.6" x 2.6" x 1.7" (67 x 67 x 44 mm)
Weight	0.15 lbs (70 g)
Inout connector	RJ 6P6C

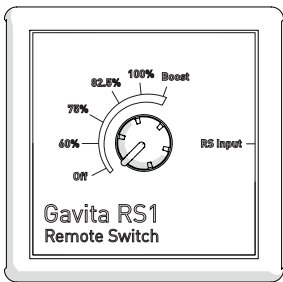
3. Box Contents

- A. RS 1 Remote Switch
- B. RJ-RJ cable (10 ft / 3.0 m)
- C. Double-sided Tape (ca. 50 mm)
- D. Manual



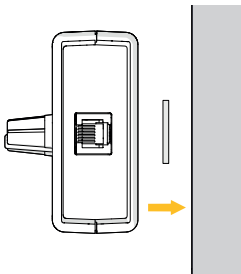
4. Ports and control

Ports and light intensity control are indicated on the front of the remote switch.



5. Installing the remote switch

Remove the cover strips from the double sided tape, and stick the remote switch to a wall.

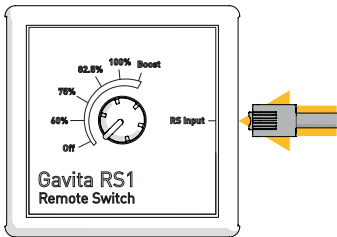


6. Connecting the remote switch

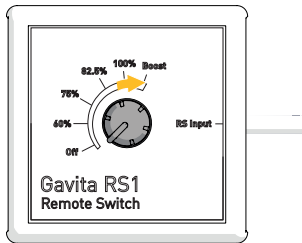
Connect the first fixture to the **RS Input** port (A).

The remote switch receives power from the **RS Input** port. No additional power supply is required.

To use your fixtures with the RS1 set the fixtures to EXT.



Caution! Before you dim or boost your HPS lamp, make sure that you run it at nominal value (100%) for at least 100 hours to stabilize the lamp. Failing to do so may lead to sub-optimal light levels and premature end of life failure of your lamp.



7. Using the remote switch

Adjust the light intensity of the lamps by rotating the **Knob** between off and 100%. Rotate the knob to boost for extra light intensity.

The percentage displayed on the RS1 is the percentage of the maximum power of the fixture. eg. 60% = 600 W for a 1000 W fixture / 450 W for a 750 W fixture.

Warning! The boost mode powers the lamp to up to 15% above nominal value (10% for a 750 W fixture). This might shorten the lifespan of the lamp.



Manual: RS1 Remote Switch

For more information, or to download documents, contact:

Gavita International bv

Oosteinderweg 127

1432 AH Aalsmeer

The Netherlands

Tel : +31(0)297-380 450

Fax : +31(0)297-380 451

E : info@gavita.com

W : www.gavita.com