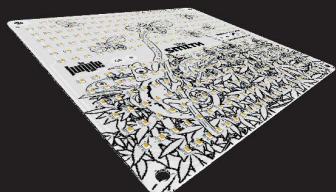




# The SMITH ⚡ 150w.

## 4000K



## The Smith 150W 4000K

Luminaire for indoor intensive cultivation.

Made in Spain

Years Warranty **2**

### ⚙️ General features

Type of connection	Phase, Neutral and Grown
Lifespan	60.000 h
LED model	SMD Samsung
Driver model	Inventronics / Moso 150W IP67
Index protection	IP20
IEC protection	Class II
Impact resistance	IK01
Heatsink material	Aluminium
Protection by SELV	Yes, extra low voltage

### ⚙️ Light features

Color temperature	4000k
Beam Angle	120°
Micromoles	296.65 micromol/sec
PAR micromol	288,05 micromol/sec
CRI	>80
Luminaire efficiency	2,05 micromol/joule
LED efficiency	2,26 micromol/joule

Ref: SMITH1504V1B



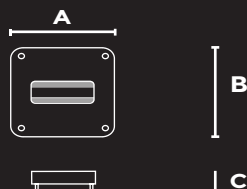
CASAMBI  
Bluetooth™

### ⚡ Electric features

Power	150W
Tolerance of power	10%
Voltage	100-240V AC
Input current	0,63A
Power factor	>0,95
Frecuency	50/60 Hz
Voltage of PCB	<60V SELV
Equivalent power	300W HPS
Switching time	<0.1 sec
Dimming and control	Yes, Casambi Bluetooth
Max. lights/circuit breaker C10	8
Max. lights/circuit breaker C16	12

### ⚡ Size

Size A	280 mm
Size B	280 mm
Size C	80 mm

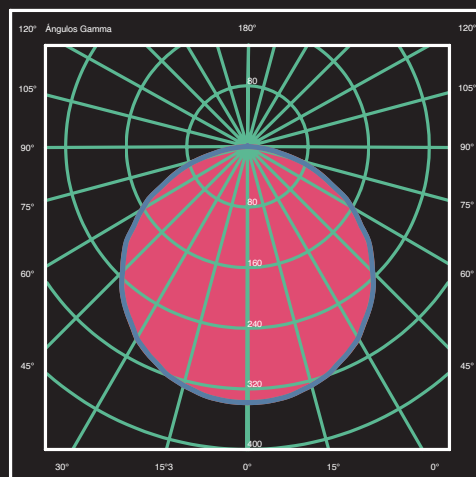


### 📶 App for Bluetooth

App for Android



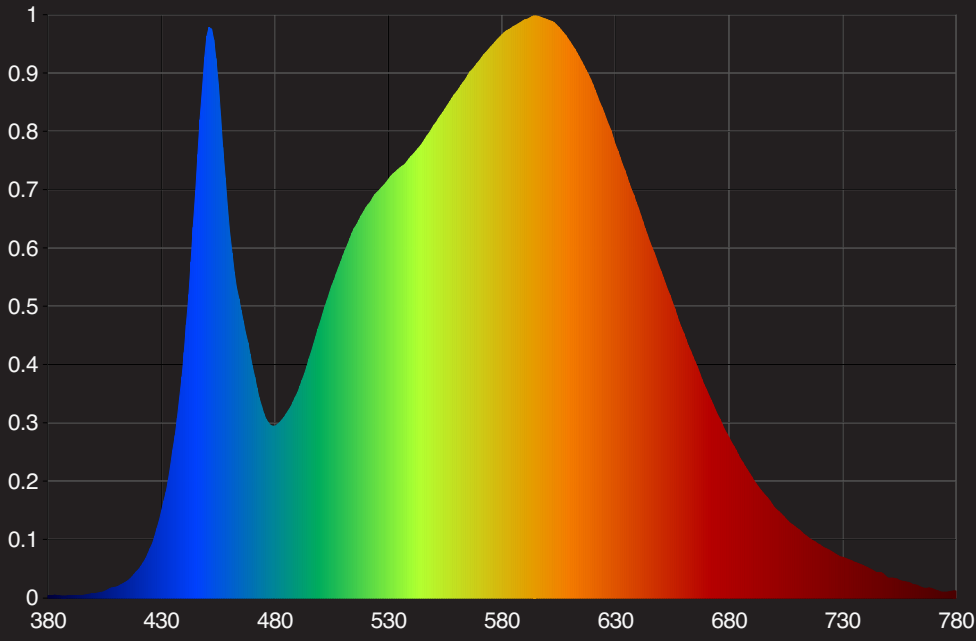
App for iOS





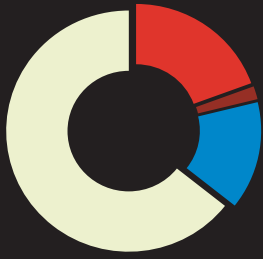
# The Jungle

Wavelength



Datos sujetos a cambios March, 2021

## Color Ratio



- Red: 19,43%
- Far Red: 1,76%
- Blue: 14,46%
- Other: 64,35%

PPF per 10nm for UI8800		
Wavelength Range (nm)	PPF (µmol/s)	
350-359	0,0000	
360-369	0,0776	
370-379	0,0432	
380-389	0,0298	
390-399	0,0528	
400-409	0,0820	
410-419	0,2387	
420-429	0,8488	
430-439	2,7812	
440-449	7,8517	
450-459	13,5637	
460-469	9,6689	
470-479	6,3188	
480-489	5,1023	
490-499	5,8698	
500-509	7,5416	
510-519	9,1977	
520-529	10,5628	
530-539	11,6771	
540-549	12,7117	
550-559	13,8777	
560-569	15,1903	
570-579	16,4812	
580-589	17,4716	
590-599	17,8727	
600-609	17,7017	
610-619	16,7296	
620-629	15,1740	
630-639	13,1787	
640-649	10,9887	
650-659	8,9303	
660-669	7,0773	
670-679	5,5056	
680-689	4,2327	
690-699	3,2327	
700-709	2,4510	
710-719	1,8331	
720-729	1,3722	
730-739	1,0198	
740-749	0,7716	
750-759	0,5722	
760-769	0,4334	
770-779	0,3300	
780-789	0,0296	
790-799	0,0000	
UV		0,1834 µmol/s 0,06%
Blue		52,4928 µmol/s 17,69%
Green		132,5304 µmol/s 44,66%
Red		102,7500 µmol/s 34,62%
Far Red		8,8127 µmol/s 2,97%