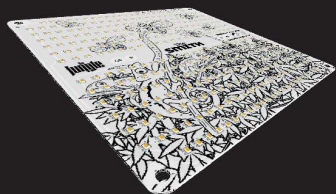




# The SMITH ⚡ 150w.

## 4000K



## The Smith 150W 4000K

Luminaire for indoor intensive cultivation.

Made in Spain

Years Warranty **2**

### ⚡ General features

|                    |                               |
|--------------------|-------------------------------|
| Type of connection | Phase, Neutral and Grown      |
| Lifespan           | 60.000 h                      |
| LED model          | SMD Samsung                   |
| Driver model       | Inventronics / Moso 150W IP67 |
| Index protection   | IP20                          |
| IEC protection     | Class II                      |
| Impact resistance  | IK01                          |
| Heatsink material  | Aluminium                     |
| Protection by SELV | Yes, extra low voltage        |

### ⚡ Light features

|                      |                     |
|----------------------|---------------------|
| Color temperature    | 4000k               |
| Beam Angle           | 120°                |
| Micromoles           | 296.65 micromol/sec |
| PAR micromol         | 288,05 micromol/sec |
| CRI                  | >80                 |
| Luminaire efficiency | 2,05 micromol/joule |
| LED efficiency       | 2,26 micromol/joule |

Ref: SMITH1504V1

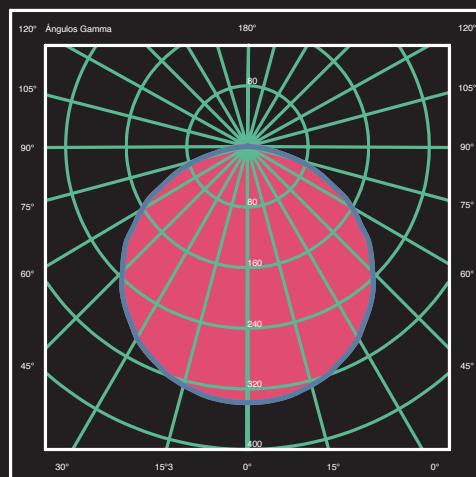
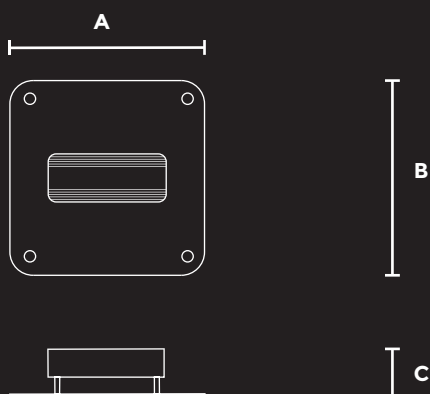


### ⚡ Electric features

|                                 |             |
|---------------------------------|-------------|
| Power                           | 150W        |
| Tolerance of power              | 10%         |
| Voltage                         | 100-240V AC |
| Input current                   | 0,63A       |
| Power factor                    | >0,95       |
| Frecuency                       | 50/60 Hz    |
| Voltage of PCB                  | <60V SELV   |
| Equivalent power                | 300W HPS    |
| Switching time                  | <0.1 sec    |
| Dimming and control             | Optional    |
| Max. lights/circuit breaker C10 | 8           |
| Max. lights/circuit breaker C16 | 12          |

### ⚡ Size

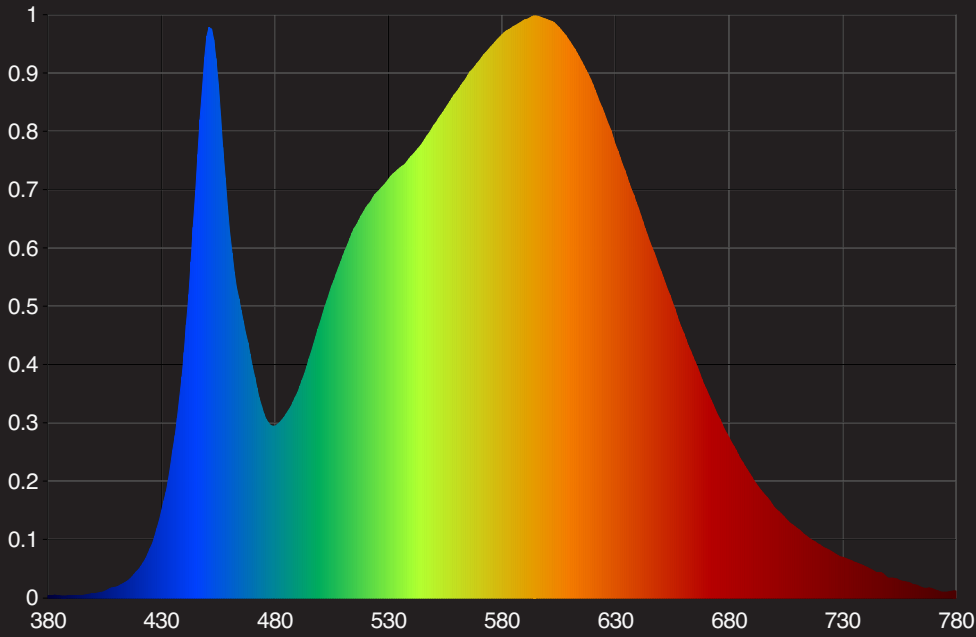
|        |        |
|--------|--------|
| Size A | 280 mm |
| Size B | 280 mm |
| Size C | 80 mm  |





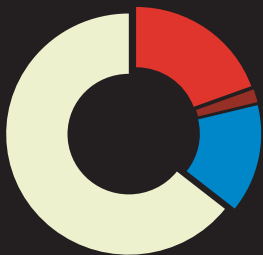
# The Jungle

Wavelength



Datos sujetos a cambios March, 2021

## Color Ratio



- Red: 19,43%
- Far Red: 1,76%
- Blue: 14,46%
- Other: 64,35%

| PPF per 10nm for UI8800 |              |         |
|-------------------------|--------------|---------|
| Wavelength Range (nm)   | PPF (µmol/s) |         |
| 350-359                 | 0,0000       | UV      |
| 360-369                 | 0,0776       |         |
| 370-379                 | 0,0432       |         |
| 380-389                 | 0,0298       |         |
| 390-399                 | 0,0528       |         |
| 400-409                 | 0,0820       | Blue    |
| 410-419                 | 0,2387       |         |
| 420-429                 | 0,8488       |         |
| 430-439                 | 2,7812       |         |
| 440-449                 | 7,8517       |         |
| 450-459                 | 13,5637      | Green   |
| 460-469                 | 9,6689       |         |
| 470-479                 | 6,3188       |         |
| 480-489                 | 5,1023       |         |
| 490-499                 | 5,8698       |         |
| 500-509                 | 7,5416       | Red     |
| 510-519                 | 9,1977       |         |
| 520-529                 | 10,5628      |         |
| 530-539                 | 11,6771      |         |
| 540-549                 | 12,7117      |         |
| 550-559                 | 13,8777      | Far Red |
| 560-569                 | 15,1903      |         |
| 570-579                 | 16,4812      |         |
| 580-589                 | 17,4716      |         |
| 590-599                 | 17,8727      |         |
| 600-609                 | 17,7017      |         |
| 610-619                 | 16,7296      |         |
| 620-629                 | 15,1740      |         |
| 630-639                 | 13,1787      |         |
| 640-649                 | 10,9887      |         |
| 650-659                 | 8,9303       |         |
| 660-669                 | 7,0773       |         |
| 670-679                 | 5,5056       |         |
| 680-689                 | 4,2327       |         |
| 690-699                 | 3,2327       |         |
| 700-709                 | 2,4510       |         |
| 710-719                 | 1,8331       |         |
| 720-729                 | 1,3722       |         |
| 730-739                 | 1,0198       |         |
| 740-749                 | 0,7716       |         |
| 750-759                 | 0,5722       |         |
| 760-769                 | 0,4334       |         |
| 770-779                 | 0,3300       |         |
| 780-789                 | 0,0296       |         |
| 790-799                 | 0,0000       |         |