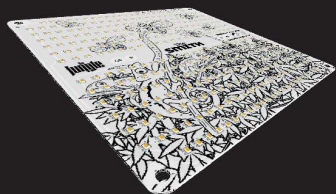




The SMITH ⚡ 150w.

5000K



The Smith 150W 5000K

Luminaire for indoor intensive cultivation.

Made in Spain

Years Warranty **2**

⚡ General features

Type of connection	Phase, Neutral and Grown
Lifespan	60.000 h
LED model	SMD Samsung
Driver model	Inventronics / Moso 150W IP67
Index protection	IP20
IEC protection	Class II
Impact resistance	IK01
Heatsink material	Aluminium
Protection by SELV	Yes, extra low voltage

⚡ Light features

Color temperature	5000k
Beam Angle	120°
Micromoles	295,79 micromol/sec
PAR micromol	289,445 micromol/sec
CRI	>80
Luminaire efficiency	2,07 micromol/joule
LED efficiency	2,27 micromol/joule

Ref: SMITH1505V1R

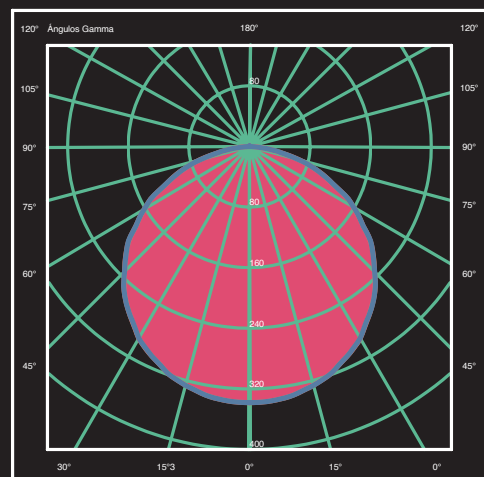
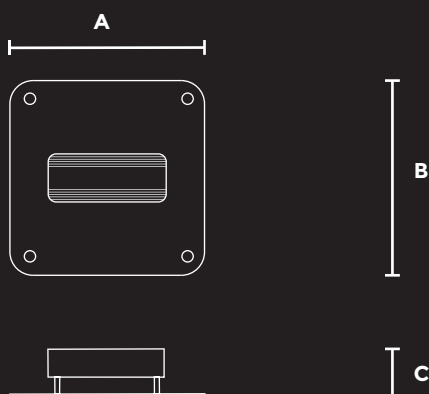


⚡ Electric features

Power	150W
Tolerance of power	10%
Voltage	100-240V AC
Input current	0,63A
Power factor	>0,95
Frecuency	50/60 Hz
Voltage of PCB	<60V SELV
Equivalent power	300W HPS
Switching time	<0.1 sec
Dimming and control	Yes, Poyenciometer
Max. lights/circuit breaker C10	8
Max. lights/circuit breaker C16	12

⚡ Size

Size A	280 mm
Size B	280 mm
Size C	80 mm

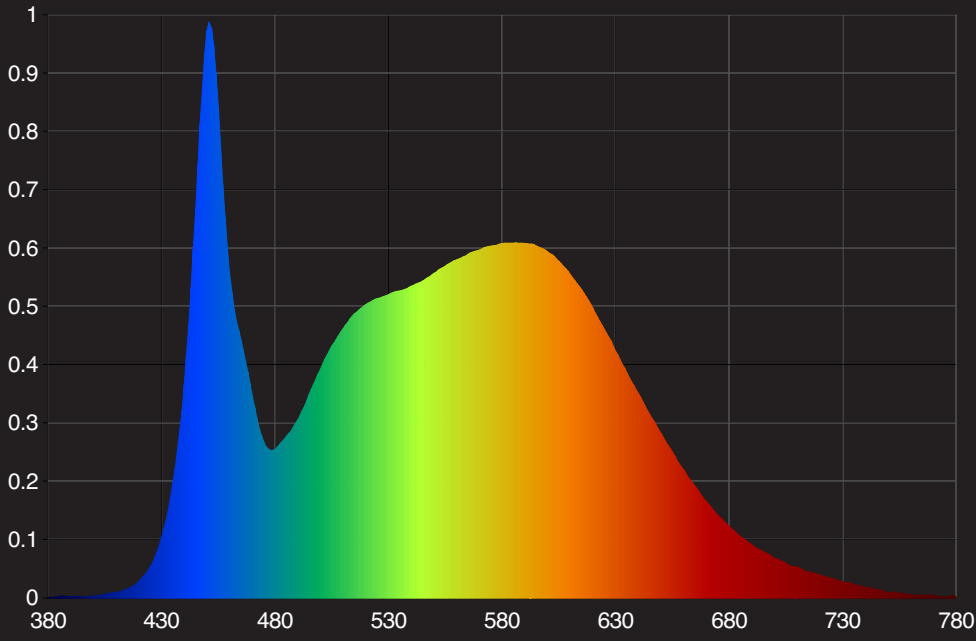




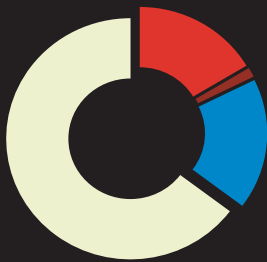
The Jungle

Wavelength

Datos sujetos a cambios March, 2021



Color Ratio



- Red: 16,43%
- Far Red: 1,29%
- Blue: 17,55%
- Other: 64,74%

PPF per 10nm for UI8800			
Wavelength Range (nm)	PPF (µmol/s)		
350-359	0,0000	UV	0,1417 µmol/s 0,05%
360-369	0,0486		
370-379	0,0323		
380-389	0,0267		
390-399	0,0340		
400-409	0,0500	Blue	62,6919 µmol/s 21,19%
410-419	0,1834		
420-429	0,8191		
430-439	3,9124		
440-449	14,8387		
450-459	16,5985	Green	138,3365 µmol/s 46,76%
460-469	8,9125		
470-479	5,2327		
480-489	5,1965		
490-499	6,9630		
500-509	9,2034	Red	88,2060 µmol/s 29,81%
510-519	10,9328		
520-529	12,1230		
530-539	12,9950		
540-549	13,8035		
550-559	14,6148	Far Red	6,4980 µmol/s 2,20%
560-569	15,3932		
570-579	16,0755		
580-589	16,5593		
590-599	16,6260		
600-609	16,0308		
610-619	14,8742		
620-629	13,2660		
630-639	11,3033		
640-649	9,2848		
650-659	7,4081		
660-669	5,7830		
670-679	4,4171		
680-689	3,3400		
690-699	2,4988		
700-709	1,8587		
710-719	1,3735		
720-729	1,0103		
730-739	0,7438		
740-749	0,5461		
750-759	0,4101		
760-769	0,3111		
770-779	0,2365		
780-789	0,0179		
790-799	0,0000		